



Portable  
marking  
solutions

xm700  
xf520  
xf530

# PORTABLE RANGE

Ergonomic and flexible, Technifor complete range of mobile solutions guarantee a durable and individual marking of all your parts, whatever your application.

## Meet your identification and traceability requirements

- During the production cycle.
- Post-manufacturing marking or at the end of a production line.
- In maintenance room.
- In inventory control and quality control.
- Before machinery and finished products shipping.
- On operating site and worksite.

### Use permanent marking:

Your products will be identified throughout their lifecycle.

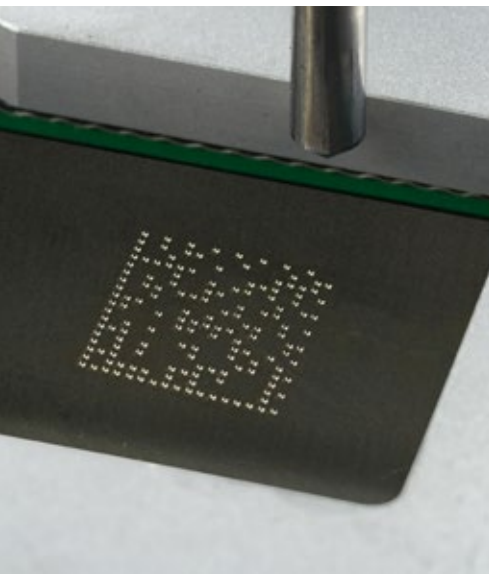


## Ensure legible and indelible marks

- **Robust and reliable solutions** resistant to any environment.
- **High quality marks** in very fast cycle times.

## Choose the good impact

- **An accurate technology:** micro-percussion creates rapid indent marking on the material surface without any stress on the part and without any chip removal.
- **Marking parameters** adapt to the different part shapes and materials and can all be saved (height, depth, positioning...).
- **An economic and ecologic solution that respects the environment:** no solvents, stickers, ink or other additives. No consumables, reduced maintenance and low energy consumption.





### Marking Made Easy

Our portable marking solutions are unique products in terms of **ease-of-use** and **connectivity**.

Integrated into the marking gun or remote, the control unit is equipped with a **new generation of ultra-fast electronics**.

**Its wide and graphical interface** allows the operator to quickly compose the required mark and guides him step by step till the realization on the part.

### Software dedicated to identification and traceability

**Simple and user-friendly**, the integrated marking program offers many functions, proven across all industry for over 30 years.

- Texts, logos, serial numbers, variables, counters, hours, 2D DataMatrix™ codes...
- Graphical preview
- Extended memory capacity
- Font catalog
- Import/export of logos, fonts, merging files, software update...
- Documentation and interface available in **over 19 languages**
- Many additional functions



# xm700

This solution identifies permanently all bulky or difficult to access products and equipment.

## Pure performance in your hand

- **Powerful:** Deep mark on the hardest surfaces.
- **Ergonomic:** makes marking easy on vertical or inclined surfaces.
- **High quality marks:** permanent marking on any shape and material.
- **Flexible connectivity** for easy data exchange with a PC, a code reader or a USB key.

*The deepest mark in its class.*



## Choose freedom

- **"Touch'n Mark":** Intuitive touch-screen interface. Large navigation icons give direct access to desired functions with your finger, a stylus, and even wearing a glove.
- **Full mobility:** the integrated control unit and the powerful belt battery allows you to mark everything everywhere, even outdoors.

## Meet your marking requirements

- **Reliable:** Robust components and shock-resistant composite materials.
- **Economical:** without consumable, reduced maintenance, sharpenable stylus point.
- **Ready to mark:** Operational out of the box. No special set-up or training required. Begin marking immediately using local language menus.



## Accessories

7" industrial color touch screen with reinforced casing and touch pencil

2 USB ports  
+ 1 RS232 port  
+ 1 Ethernet port

Reinforced heavy-duty cable



Marking trigger

M2S solid carbide marking tool:

- Power
- optimal cooling
- durability

Adjustable metal feet:

- perfect support
- V-groove for tube marking

Powered by battery or directly from the mains supply:



The longest autonomy on the market:

- Lithium-ion technology battery
- light weight
- constant power



- Complete range of accessories:

Support column

Lighting of the marking area

Side handle (right- or left-handing)

Lifting ring for balancer

Barcode and 2D code reader

Waterproof suitcase

## Identification & traceability at your fingertips

With a large screen and navigation icons, the interface includes a touch screen and allows easy and intuitive operation.

Mark each item individually with references, serial numbers, batch numbers, date, 2D codes and save your marking settings.

Easily identify your machinery & equipment, assets, tooling, construction equipment, metal structures...

## Technical characteristics

- Technology: Electromagnetic micro-percussion
- Marking area: 80 x 30 mm
- Integrated control unit with touch screen software



# XF520CP/m

This marking gun offers both speed and handling qualities to identify permanently all types of parts.

## Step up a gear

- **High-performance:** Uses the same technology as our integrated marking machines, running 24hours/day on automated production lines: serial numbers, logos, Data Matrix™ codes... up to **10 characters per second!**
- **Hand-adapted:** Lightweight, its compact size can mark directly and accurately all your products and equipment.

*The most compact marking gun on the market.*



## Ergonomics and versatility at the heart of your application

**Linked to a barcode scanner, a keyboard or other computer systems**, the XF520 is able to receive any data to be marked. It meets your identification needs on all parts, shapes and materials (integrated V-shaped universal feet system).

**Perfectly balanced and easy to handle** (intuitive grip), it offers optimal stability, without uncomfortable vibration.

## Technical characteristics

- **Technology:** Electromagnetic or pneumatic micro-percussion
- **Marking area:** 50 x 20 mm
- **Remote UC500 control unit**

The XF530 portable marking solution meets the needs of deep marking in the most severe industrial environments.

# XF530P/m



## Concentrated power for deep marking

- **Powerful:** fitted with an extremely powerful stylus able to trace large characters, the XF530 can mark deeply any surface and material.

- **Versatile:** with a large marking area, orientable handles, adjustable V-shaped universal feet, it fits your part and suits your operation.

*The most powerful marking solution of its generation.*

## A traceability that stands the test of time

**Tamper-proof and sustainable**, the marks are not affected by finishing operations, painting, climatic conditions, the contaminants....

**Used in the harshest environments**, the XF530 has proven sturdiness and reliability in steel, mining, oil&gas, metal building, shipyards or handling systems industry.

## Technical characteristics

- **Technology:** Electromagnetic or pneumatic micro-percussion
- **Marking area:** 200 x 50 mm
- **Remote UC500 control unit**





### Versatile solutions:

- **Individual identification** of metal and plastic parts.
- **Permanent marking** on flat and curved surfaces.
- **Deep marks** on hard materials, rough, painted parts.
- **Direct part marking** before treatment (sandblasting, galvanizing, shotblasting, anti-corrosion paintings..).
- **Anti-theft and anti-counterfeiting identification.**

Mechanical  
Automotive  
Oil&gas  
Steel construction  
Mining industry

Military and armament  
Marine  
Railway  
Lifting&material handling systems  
Public&industrial equipment



### Gravotech Marking SAS

466 rue des Mercières - Z.I. PERICA  
69140 Rillieux-la-Pape - FRANCE  
Tel : +33 478 558 552  
Fax : +33 478 064 372  
tf@technifor.com